

Horse Trailers

TITAN

Horse Trailers



Dealer



Titan Gooseneck Trailers



Classic II
6' 8" x 24' 4-Horse Classic
Shown with optional
air conditioner



Renegade II
6' 8" x 20' 3-Horse Renegade
Shown with optional Bay Window

Classic Gooseneck Horse II Standard Features

- Smooth Outside Galvanized Skin
- Torsion EZ Lube Axles
- 7' Inside Height
- Dressing Room w/Lockable Latch
- Escape Door in Front of 1st Horse
- Saddle Rack w/Bridle Hooks
- Carpet Package in Dressing Room
- Plexiglas on Butt Side
- Rubber Floor Mats (Horse Area Only)
- Dome Lights (1-Dressing Room, 1 - Per Divider)
- Spray on Gravel Guard
- 12 ga. Roof Cove
- Greasable Exterior Hinges
- Spring Loaded Dual Pin Jack
- 7 Prong Heavy Cord w/Junction Box
- Double Lined w/Poly Rumber
- Electric Brakes on all 4 Wheels
- Solid Dressing Room Wall
- 2 - 18 x 44 Bus Windows in Nose
- Slant Dividers (Rear Divider Telescoping)
- Dome Style Roof Vent (Braced for AC)
- Sealed Beam Recessed L.E.D. Lights
- Pop-Up Roof Vents in Horse Area
- Porch Light at Dressing Room Door
- Mid Mount Drop Down Feed Doors w/Window and Drop Bars
- Spare Wheel
- Inside and Outside Ties
- Rubber Rear Bumper
- Safety Chains, Hooks, and Battery
- Galvannealed Latches



Avalanche
6'8" x 16' 3-Horse Avalanche



Challenger Standard Features

- Torsion EZ Lube Axles w/6 Bolt Hubs
- Outside Uprights on 24" Centers
- Roofbow & Crossmembers on 24" Centers
- Factory Steel Door
- 3 Tier Saddle Rack
- Inside Tie Rings
- Safety Chains, Hooks, and Battery
- Spring Loaded Drop Leg Jack
- 7 Prong Heavy Cord

- 6' 6" Inside Height
- Sealed Beam Lights
- Electric Brakes on all 4 Wheels
- Solid Dressing Room Wall
- 2 Bus Windows in Nose
- 1 Dome Light in Dressing Room
- Spare Wheel
- Back Fully Encloses (No Slide)
- Spray on Gravel Guard

Challenger
6'8" x 16' Challenger 3-Horse Slant
Shown with rear tack & dividers

Avalanche Gooseneck Standard Features

- No Deduction for Deleting Standard Features
- Torsion EZ Lube Axles w/6 Bolt Hubs
- 7' Inside Height
- Dressing Room Door
- Drop Down Feed Doors w/ Windows & Drop Bars
- 3 Tier Saddle Rack w/Bridle Hooks
- 2 - 18" x 44" Bus Windows in the Nose
- Dome Lights (1-Dress Room, 1-Per Divider)
- Inside and Outside Tiers
- Safety Chains, Hooks & Battery
- Blanket Bar
- 7-Prong Heavy Cord
- Standard Color will be White
- Electric Brakes on all 4 Wheels
- Solid Dressing Room Wall
- Slant Dividers (Rear Divider Telescoping)
- Bus Windows on Butt Side
- Rubber Rear Bumper
- Sealed Beam Recessed L.E.D. Lights
- Pop-up Roof Vents in Horse Area
- Aluminum Tread Bright Gravel Guard
- Double Back Doors
- Rubber Floor Mats Entire Floor
- Spare Rim

Titan Bumper Series



Renegade

6'8" x 16' 3-Horse Renegade II
Shown with optional windows in nose.

Add This Package to the Classic Trailer

to Make into a Renegade

Straight V Nose
Galvannealed Skin
Greaseable Hinges
Fully Caulked
Tack Organizer
Aluminum Diamond Plate Package Consisting of:
Formed Running Boards, Formed Fenders, Stem Gusset Caps &
Gravel Guard
Renegade Graphics & Logos.

Classic Bumper Hitch Horse II

Smooth Outside Galvanneal Skin
Torsion EZ Lube Axles
7' Inside Height
Dressing Room w/Lockable Latch
Escape Door in Front of 1st Horse
Saddle Rack w/Bridle Hooks
Dome Style Roof Vent (Braced For AC)
Carpet Package in Dressing Room
Porch Light at Dressing Room Door
Rubber Floor Mats (Horse Area Only)
Dome Lights (1 Dress Room, 1 - Per Divider)
Spray in Gravel Guard
Back Gate Fully Enclosed
Spare Wheel
Galvanneal Latches
Double Lined w/ Poly Rumber

Electric Brakes on all 4 Wheels
Solid Dressing Room Wall
Slant Dividers (Rear Divider Telescoping)
Rubber Rear Bumper
Sealed Beam Recessed L.E.D. Lights
Plexiglas on Butt Side
Pop-Up Roof Vents in Horse Area
Mid Mount Drop Down Feed Doors w/ Window and Drop Bars
Inside and Outside ties
12 gauge roof Cove
Greaseable Exterior Hinges
Safety Chains, Hooks, and Battery
7 Prong Heavy Cord
2-5/16" Coupler



Classic

6'8" x 16' 3-Horse Classic II

Titan Panel Package



Standard Features

Insulated Walls and Ceiling*

Paneled Walls and Ceiling*

4 Gang Plug-in

30 Amp Breaker

2 Windows in Nose Trimmed Out

2 Interior 12V Lights

Standard Carpet Package

13,500 B.T.U. Air Conditioner w/ 5,600 B.T.U. Heat Strip

Trailers with Panel Package need to be ordered with

either a 1/2 Boot Box or Full Width Boot Box

Popular Options

TV Antenna w/ Coaxial Connection

Crank Up Satellite Dish

2 or 3 Cup 110V Vanity Lighting (each) (Available in Brass or Brushed Nickel)

Directional 110V Reading Light/Sconce (each) (Available in Brass, Brushed Nickel, Chrome)

Flush Mounted 12V Halogen Lights in Ceiling (each) (Available in Brass, Chrome, Nickel, Platinum)

Lighted Grab Handle

Grab Handle

Personalized Engraving Available on Grab Handles (plus regular grab handle price)

Camper Step

Extra 110V Outlets (each)

12V Power Outlet

Light Switch by Door

25 Gallon Water Tank

12Volt Deep Cycle Battery

Aluminum Battery Box w/ 12 Volt Deep Cycle Battery

110V to 12V Power Converter

Special Design Lighting Available (Sconces, Vanities)



Titan Bumper Series



6'8" x 16' 3-Horse Avalanche I.



Challenger
6'8" x 16' 3-Horse Slant
Shown with porch light and dome vent.

Avalanche II

6'8" x 16' 3-Horse Avalanche II



Bumper Avalanche II Standard Features

Smooth Outside Galvanized Skin
Torsion EZ Lube Axles
7' Inside Height
Dressing Room w/Lockable Latch
Drop Down Feed Door w/ Window and Drop Bars
Dome Lights (1 - Dressing Room, 1 - Divider)
Inside and Outside Ties
Safety Chains, Hooks and Battery
Blanket Bar
2-5/16" Coupler
Rubber Rear Bumper
Standard Color will be White

Double Lined w/ Poly Rumber
Electric Brakes on all 4 Wheels
Solid Dressing Room Wall
Slant Dividers (Rear Divider Telescoping)
Swing Out Saddle Rack w/ Bridle Hooks
Sealed Beam Recessed L.E.D. Lights
Aluminum Tread Bright Gravel Guard
Back Gate Fully Enclosed (No Slide)
Rubber Floor Mats Entire Trailer
Spare Rim
7 Prong Heavy Cord

Titan Graphics Options



153 Cardinal Red 58 Silver Metallic 19 Wine 43 Dark Cherry MET.



253 Bronze Metallic 352 Champagne MET. 45 Light Gold MET. 55 Black



014 Dark Charcoal MET. 58 Silver Metallic 10 Smoke Metallic 55 Black



59 Dark Blue MET. 510 Stellar Blue MET. 364 Shale Blue MET. 55 Black



367 Dark Green MET. 321 Winter Green MET. 726 Hunter Green MET. 55 Black



153 Cardinal Red 700 Aztec Silver 60 Black Metallic 50 White



59 Dark Blue Met. 700 Aztec Silver 510 Stellar Blue 50 White



253 Bronze Metallic 45 Light Gold Met. 60 Black Metallic 50 White

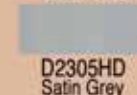
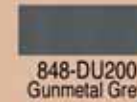


014 Dark Charcoal Met. 700 Aztec Silver 60 Black Metallic 50 White



60 Black Metallic 412 Pewter Met. 102 Khaki Metallic

Paint Color Chart



Features & Options



Titan fully enclosed
1-piece backgate



Challenger fully-enclosed
backgate



Renegade and Classic
double-back doors



Divider



Factory Steel Door

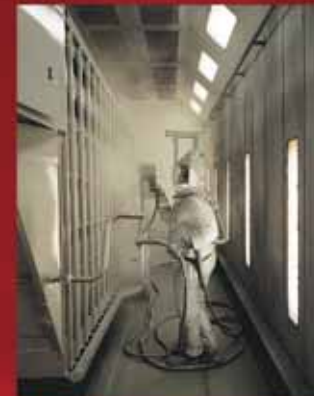


Camper Screen Door



Swing out saddle rack
with rear rack

Titan Trailer Mfg. has excelled to the highest level in painting facilities. Our wash cycle involves a degreasing detergent, followed by a phosphate rinse, then baked dry to set the stage for priming. After priming, the trailer is shot with a high solids urethane topcoat. Trailers are then returned to the infrared bake oven for a complete cure of finish. Titan uses the pro-mix paint system. The pro-mix electronic flow metering provides precise, continuous on-line ratio monitoring. Our down-draft booth and electronic mixing gives every Titan Trailer a superior quality finish.



Titan Trailers invested in the best bake oven on the market. The infrared bake oven can reach 160 F and insure a full paint cure in 20 minutes. Airborne contaminants are often present in traditional curing systems due to large volumes of air needed to feed the process, infrared bake ovens don't require this volume of air. Infrared bake ovens will give you higher gloss, longer lasting and harder finishes on Titan Trailers.